

*Aldine's Encounter  
Gifted and Talented  
Program*

Teague Middle School



# *Gifted and Talented Leaders*

Dyann Wilson-GT Coordinator/Counselor

[dkwilson@aldineisd.org](mailto:dkwilson@aldineisd.org)

LaTasha Glenn-GT Administrator/Curriculum AP

[lglenne@aldineisd.org](mailto:lglenne@aldineisd.org)

281-233-4310

# State Definition of Gifted and Talented

Gifted and Talented student means a child/youth who performs at or shows the potential for performing at a **remarkably high level of accomplishment** when compared to others of the same age, experience, or environment and who **exhibits high performance and capability** in an intellectual, creative, or artistic area. **Aldine's Encounters GT Program** strives to support and enhance the potential of those students who exhibit these characteristics.

# State Goal for G/T Program



Students who participate in services designed for gifted/talented students will demonstrate skills in self-directed learning, thinking, research, and communication as evidenced by the development of innovative products and performances that reflect individuality and creativity and are advanced in relation to students of similar age, experience, or environment. High school graduates who have participated in services for gifted/talented students will have produced products and performances of professional quality as part of their program services.

# CHARACTERISTICS OF THE GIFTED

## Characteristics of the Gifted

A gifted and talented child may exhibit some of the following characteristics:

1. Has unusually advanced vocabulary for age or grade level; uses terms in a meaningful way; has verbal fluency.
2. Possesses a large storehouse of information about a variety of topics (beyond the usual interests of youngsters his age).
3. Has quick mastery and recall of factual information; is easily bored with routine tasks.
4. Has rapid insight into cause-effect relationships; tries to discover the how and why of things; asks provocative questions (as distinct from informational or factual questions); wants to know what makes things (or people) "tick".
5. Has a ready grasp of underlying principles and can quickly make valid generalizations and look for similarities in events, people, and things.
6. Is a keen and alert observer, usually sees more than others in a story or film.
7. Reads a great deal on his own; usually prefers adult-level books; does not avoid difficult material; may show a preference for factual material.
8. Tries to understand complicated material by separating it into its respective parts; reasons out things for himself; sees logical and common sense answers.
9. Becomes absorbed and truly involved in certain topics or problems; is persistent in seeking task completion.
10. Strives toward perfection; is self-critical; is not easily satisfied with his own speed or products.
11. Prefers to work independently; requires little direction from teachers.
12. Is interested in many "adult" problems such as religion, politics, sex, race--more than usual for age level.
13. Likes to organize and bring structure to things, people, and situations.
14. Is quite concerned with right and wrong, good and bad; often evaluates and passes judgment on events, people, and things.
15. Displays a great deal of curiosity about many things; is constantly asking questions about anything and everything.

# Gifted and Talented Program in Aldine ISD

A GIFTED AND TALENTED PROGRAM IS PROVIDED IN EVERY SCHOOL. THE SERVICES ARE UNIFIED THROUGH A CURRICULUM SCOPE AND SEQUENCE OF ACADEMICS. THERE ARE COMMON STUDENT EXPECTATIONS AND PERFORMANCE STANDARDS FOR EACH COURSE

# Aldine's Gifted and Talented Program

ALDINE'S GT PROGRAM  
IS A SUBJECT SPECIFIC  
PROGRAM

THE PROGRAM IS A K-  
12 PROGRAM WITH A  
SCOPE AND SEQUENCE  
OR REQUIREMENTS FOR  
EACH SUBJECT.

ALDINE SCREENS STUDENTS  
FOR PLACEMENT IN  
LANGUAGE ARTS AND MATH  
IN THE BEGINNING OF  
KINDERGARTEN.

SCREENING FOR SS AND  
SCIENCE BEGINS AT THE  
END OF 4TH GRADE OR THE  
BEGINNING OF 5TH GRADE.

# Screening Process

Nomination

Screening

Committee Review

Identification(Ongoing)

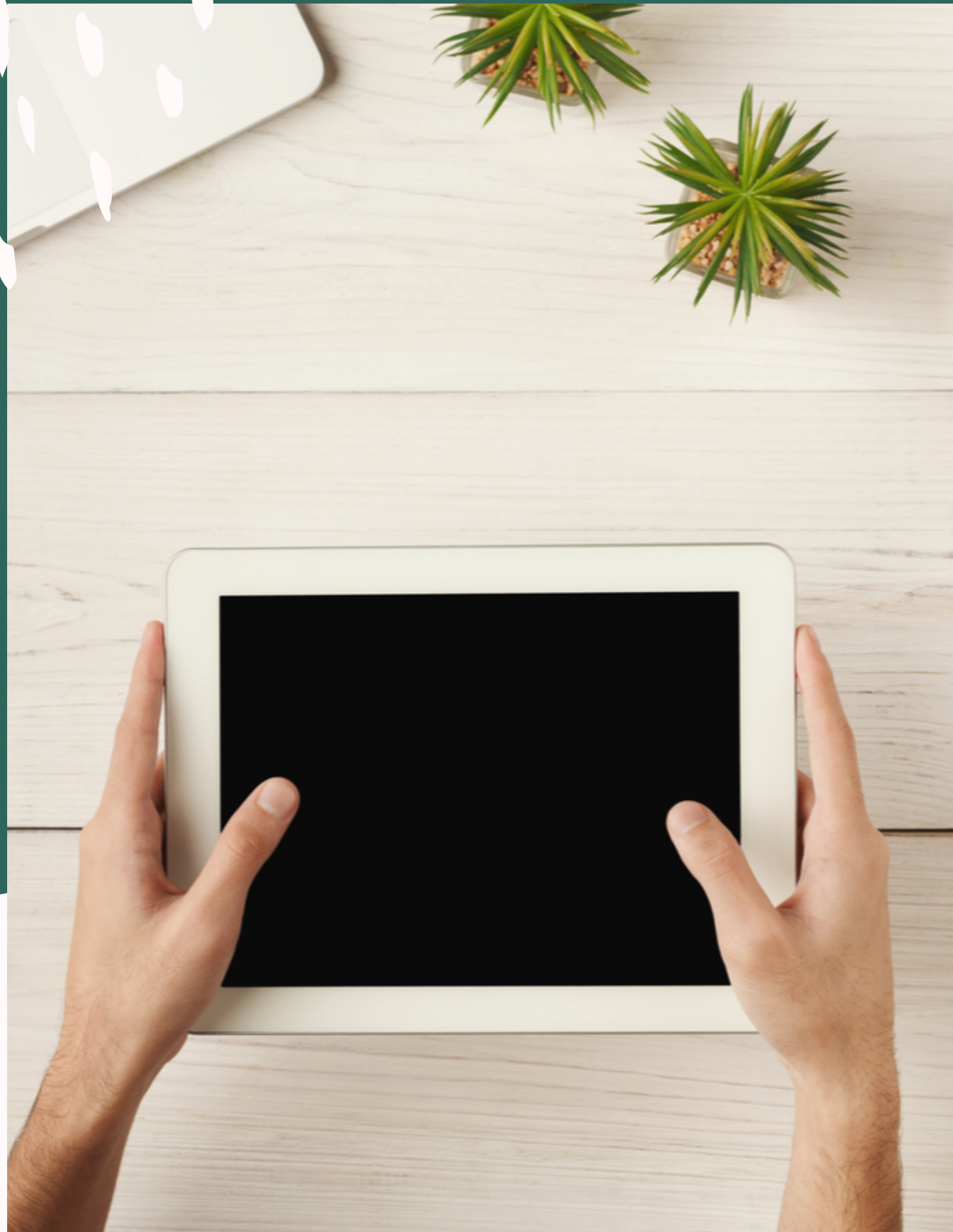
Re-Nomination(if necessary)

Appeal(if necessary)



*Please NO JE:*

CURRENT LEGISLATION MANDATES A MINIMUM OF 30 HOURS OF TRAINING FOR GT TEACHERS BY THE END OF THE FIRST SEMESTER. THEY SHALL ALSO ACQUIRE SIX HOURS OF REFRESHER COURSES EACH YEAR.



# Nomination Process

Each building has a GT coordinator.

Anyone can nominate a student for the program. The GT coordinator provides GT characteristics, appropriate nomination form and permission to screen to person nominating student.

# Screening Process

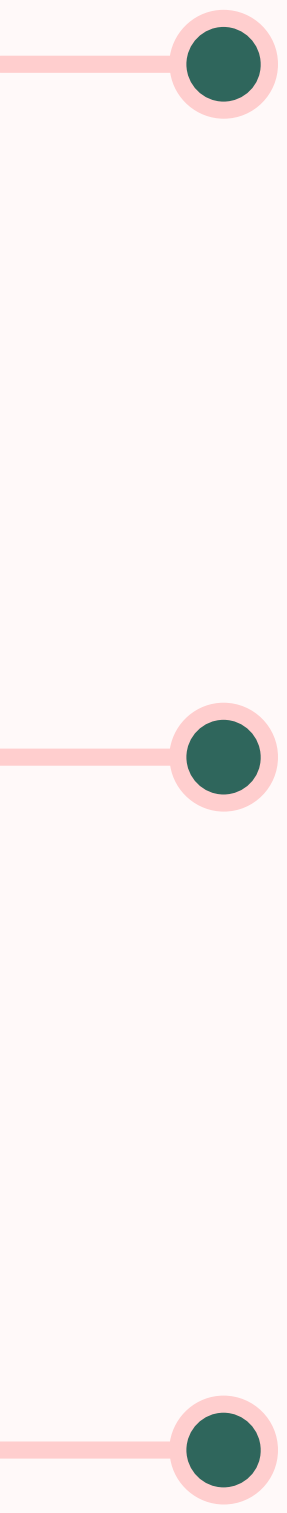
GT Coordinator collects data and makes a decision to screen.

A minimum of 6 criteria may be reviewed for each student nominated for the Encounters Program.

GT Coordinator administers norm-referenced achievement test and ability test and completes

identification matrix for review (NNAT)

Final selection for program placement is made by a committee at the building level. The committee is composed of the campus GT coordinator and at least 2 other people.



A campus GT Committee is composed of at least 3 staff members who have at least 6 hours of training in Nature and Needs of GT Students.

The screening matrix provides the committee an opportunity to review quantitative and qualitative data.  
Quantitative: STAAR and Benchmarks  
Qualitative: Grades, Teacher Nominations, and Parent Nominations.

The committee looks for academic potential and motivation for exceptional performance.



# *Building Committee Review*

# Identification and Placement

Final selection for program placement is made by the GT committee at the building level.

The committee is composed of the campus GT coordinator and at least two other persons.

These members must be knowledgeable of the needs and potential of GT students and familiar with the state guidelines.

# Monitoring and Placement

Once placed in the program, the students are monitored for progress. Please remember the students receive accelerated instruction in the areas identified.

Our goal is for the student to be **SUCCESSFUL**.

A student may be exited due to overall poor academic performance.

Parents are notified of removal; parent may also initiate removal from the program.